

## Summary of Industrial Production in April 2022

The Manufacturing Production Index of industrial production in April 2022 increased by 0.6 percent compared to the same month last year, as a result of the expansion of key industries such as the automotive industry, the petroleum refining industry and the other rubber product industry. The Capacity Utilization Rate in April 2022 was 58.9 percent.

### The Manufacturing Production Index of Key Sectoral Industries in April 2022

➤ The key industrial sectors that have expanded are:



The MPI of the **automotive industry** grew by 12.8 percent compared to the same month last year due to the expansion of both domestic and international markets which is in line with the continual economic recovery. Business sectors can start getting back to their normal economic activities.



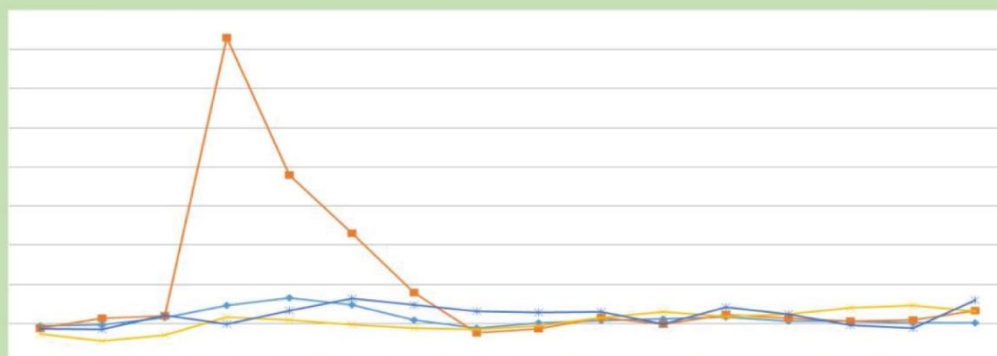
The MPI of the **petroleum refining industry** grew by 12.5 percent compared to the same month last year, mainly an increase from diesel fuel and jet fuel. Due to the relaxation of pandemic control measures, the demand for domestic transportation fuels increased during the Songkran festival, as the result, the consumption of refined petroleum products increased more than last year.



The MPI of the **other rubber product industry** grew by 23.4 percent compared to the same month last year, mainly an increase from block rubber. The production last year couldn't run at full capacity because some workers were infected with COVID-19. This year, the production and the delivery have increased because the situation began to unravel.

**MPI of Key Industrial Products with Growth in April 2022**

Change rate compared to the same month in the previous year (%)



	Jan.	Feb.	Mar.	Apr.	May	Jun.	Jul.	Aug.	Sep.	Oct.	Nov.	Dec.	Jan.	Feb.	Mar.	Apr.
	2021												2022			
MPI	-2.4	-1.2	5.8	18.2	26.0	18.6	3.7	-4.9	0.4	2.7	4.6	6.7	2.0	2.5	0.4	0.6
Manufacture of motor vehicles	-5.2	5.0	7.5	291.9	151.4	92.0	31.5	-9.8	-5.4	6.0	-0.9	9.1	5.1	2.2	3.3	12.8
Manufacture of refined petroleum	-10.6	-18.1	-12.0	6.2	3.7	-1.6	-4.8	-6.1	-2.7	6.0	11.9	6.7	9.3	15.9	18.1	12.5
Manufacture of other rubber products	-5.8	-6.1	8.3	-0.5	12.7	25.4	18.7	12.2	11.3	11.9	-0.7	16.7	9.4	-2.0	-4.7	23.4

➤ The key industrial sectors that have contracted are:



The MPI of the **hard disk drive industry** contracted by 28.1 percent compared to the same month last year. The production and sales of both hard disk drives and printers decreased because of the lockdown in China's key port cities which affected both logistics problems and raw material shortages in production.

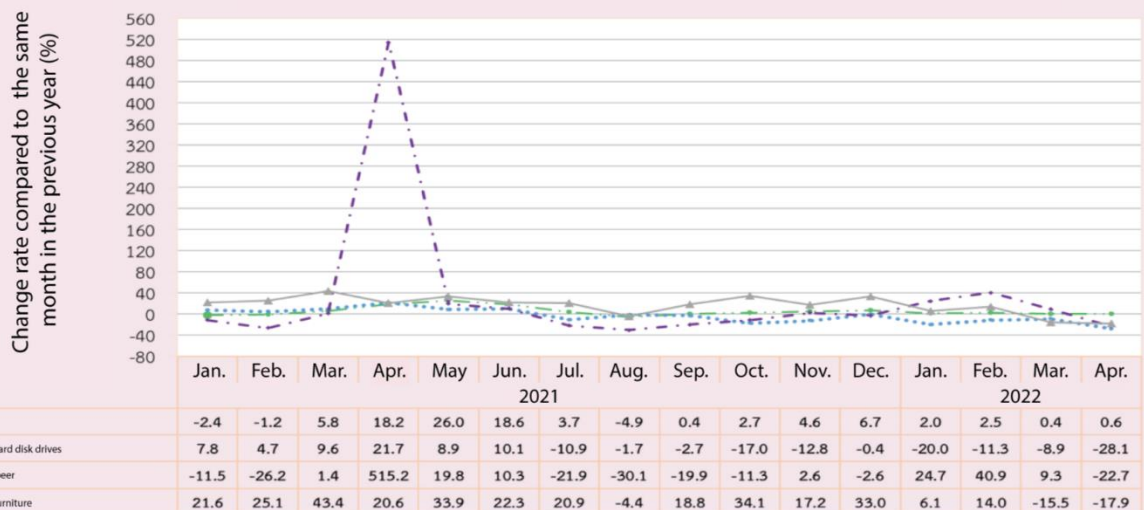


The MPI of the **beer industry** contracted by 22.7 percent compared to the same month last year. Most of the manufacturers raised beer prices in March affecting purchasing power during the economic recovery period. This caused a decrease of beer consumption.



The MPI of the **furniture industry** contracted by 17.9 percent compared to the same month last year, mainly a decrease from wooden furniture. The order reached a normal level because the demand had increased during the work-from-home period. Furthermore, some of the workers were infected with COVID-19 this year and the shipping costs rose.

Declined MPI of Key Industrial Sectors in April 2022



Capacity Utilization Rate in **April 2022**

stood at

58.9

Capacity Utilization Rate in **April 2021** stood at **59.3**

Capacity Utilization Rate in **April 2020** stood at **50.3**