

## Summary of Industrial Production in January 2022

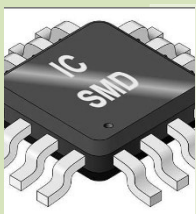
The Manufacturing Production Index of industrial production in January 2022 increased by 2.0 percent compared to the same month last year, as a result of the expansion of key industry products such as the manufacturing industry of refinery petroleum, electronic components and automobiles. The capacity utilization rate in January 2022 was 65.9 percent.

### The Manufacturing Production Index of Key Sectoral Industries in January 2022

➤ The key industrial sectors that have expanded are:



The MPI of the petroleum refining products manufacturing industry grew by 9.2 percent compared to the same month of the previous year, mainly an increase from diesel fuel, gasohol 95 and gasoline 95 because of the relaxation of pandemic control measures and the opening of the country to tourists, economic activity has increased. This has an impact on the demand for additional oil for transportation and travel.

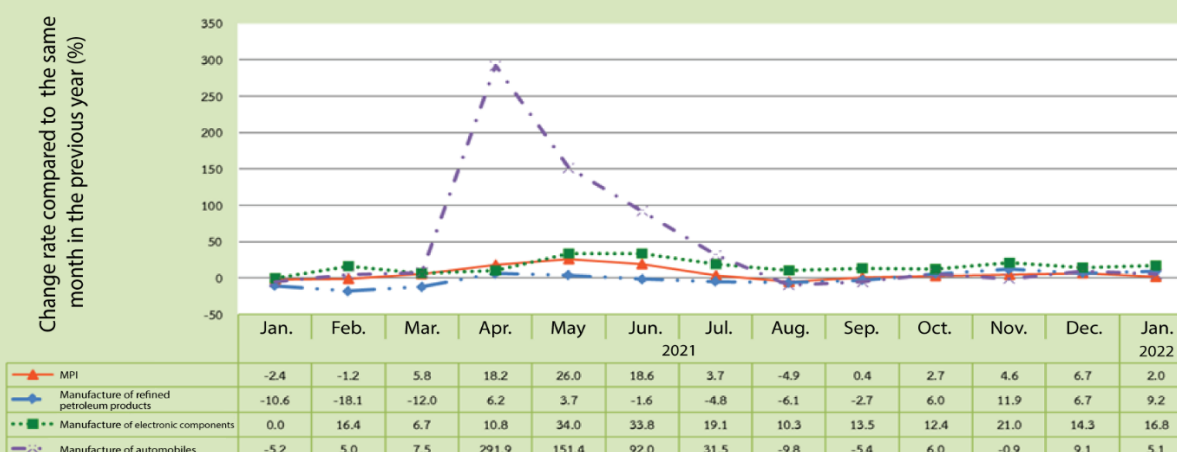


The MPI of the electronic components manufacturing industry grew by 16.8 percent compared to the same month of the previous year, mainly an increase from integrated circuit (IC) and printed circuit board assembly (PCBA) because of the world's growing demand for electronic components and especially using IoT devices.



The MPI of the automotive manufacturing industry grew by 5.1 percent compared to the same month of the previous year, mainly an increase from pickup trucks, small passenger cars and diesel engines because of the relaxation of pandemic control measures and the opening of the country to tourists. Because the consumers are less anxious, the demand for automobiles is increasing in both everyday and working life.

MPI of Key Industrial Products with Growth in January 2022



➤ The key industrial sectors that have contracted are:



The MPI of the hard disk drive (HDD) manufacturing industry contracted by 20.0 percent compared to the same month of the previous year because decreasing demand for hard disk drives in computers, both notebooks and PCs, was in line with the trend of decelerating computer demand.

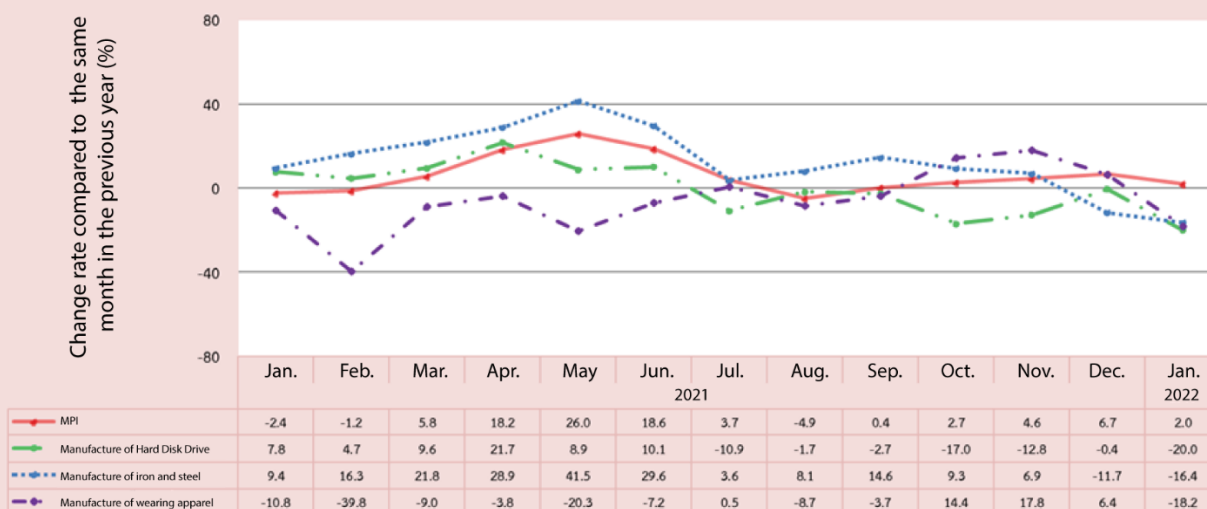


The MPI of the fundamental iron and steel manufacturing industry contracted by 16.4 percent compared to the same month of the previous year, mainly a decrease from the production of iron and steel sheets and especially hot-rolled steel coils and cold-rolled steel sheets. Due to a decrease in demand of goods from less consumer's orders, the production is likely to fall.



The MPI of the wearing apparel manufacturing industry contracted by 18.2 percent compared to the same month of the previous year, mainly a decrease from the manufacture of underwear. Due to the pandemic of COVID-19, consumers lose purchasing power.

Declined MPI of Key Industrial Sectors in January 2022



Capacity utilization rate in January 2022

65.9

stood at

Capacity utilization rate in **January 2021** stood at **65.3 percent**.

Capacity utilization rate in **January 2020** stood at **66.6 percent**.