

Summary of Industrial Production in November 2021

Concerning the industrial production in November 2021, the Manufacturing Production Index (MPI) has expanded by 4.8 percent, compared with the same month of the previous year, which has been caused by the expansion of key industries, such as products from petroleum refineries, electronic parts and circuit boards, and plastic pellets. The Capacity Utilization Rate in November 2021 is 65.8 percent.

Manufacturing Production Indexes of Key Industries

The MPI in November 2021 has expanded, key industries with expanded production include products from petroleum refineries, electronic parts and circuit boards, and plastic pellets are as follows;



The MPI of the petroleum refinery industry has expanded by 11.9 percent, compared with the same month of the previous year, production has expanded from diesel and gasoline because the lockdown measures have been relaxed and the country has opened for tourists. Thus, there are more travel, transport and economic activities.

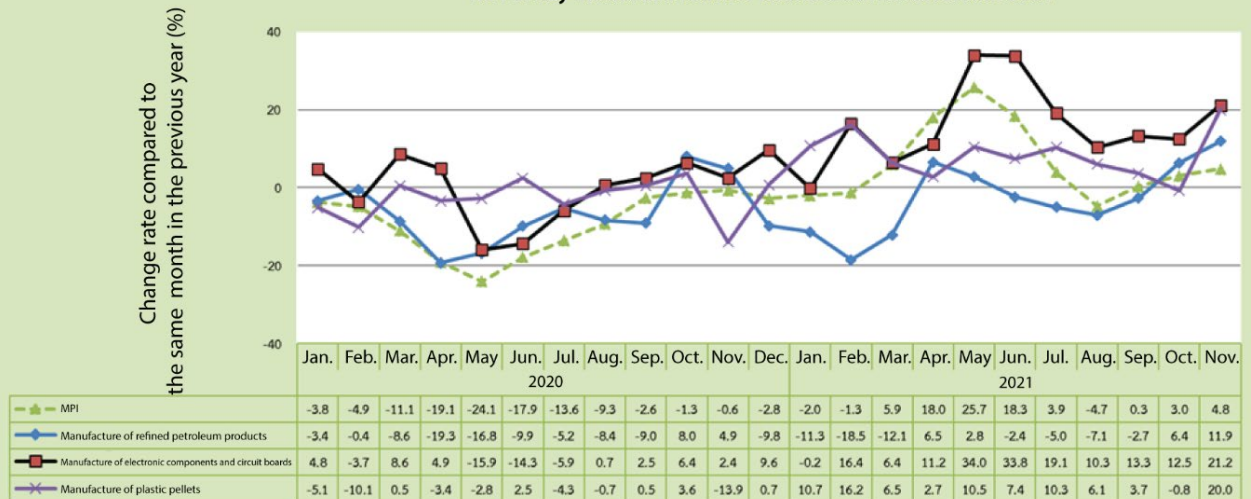


The MPI of the electronic parts and circuit boards has expanded by 21.2 percent, compared with the same month of the previous year, due to the demands for integrated circuits (IC) and printed wiring boards (PWB) mainly because the demand for electronic parts in the world market tend to increase, especially in the automotive industry where the demand has increased constantly.



The MPI of products from plastic pellets and upstream artificial rubber has expanded by 20.0 percent, compared with the same month of the previous year. The expansion is mainly from the increases in Polyethylene Resin, Polypropylene Resin, Ethylene, Propylene and Benzene because in the previous year, there was a break for maintenance work by some producers. Consequently, compared with the production in the former year, the production this year has increased.

MPI of Key Industrial Products with Growth in November 2021



Meanwhile, industries with reducing production are computer and accessories, upstream chemical products and sugar.



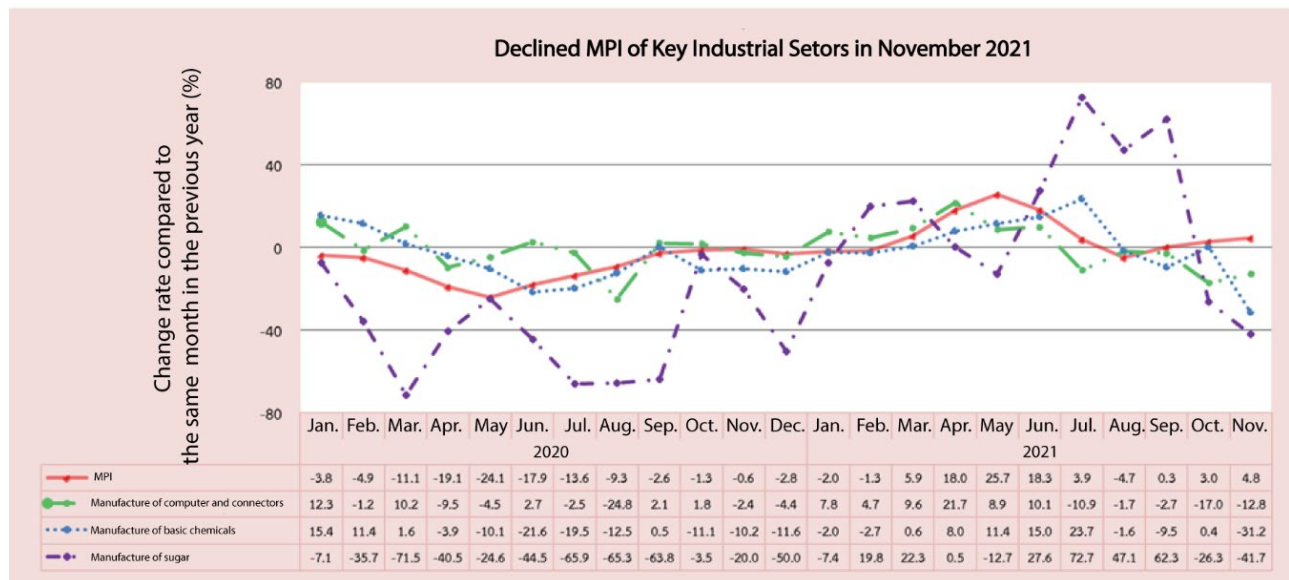
The production of computer and accessories has reduced by 12.8 percent, compared with the same month in the previous year, mainly from hard disk drives and printers, this is due to the effect of the spreading of the COVID-19 disease and the shortage of containers, the high freight and the lacking of transport flights. Consequently, the products used in production are lack and the production cannot be done at full capacity.



The production of upstream chemical products has reduced by 31.2 compared with the same month in the previous year, because of the break for maintenance works for certain producers and the lacking of raw material temporarily, including the use of lined tapioca as a raw material instead of fresh tapioca as it comes at a low cost. Consequently, the production (ethanol) has decreased.



The production of sugar has reduced by 41.7 percent compared with the same month in the previous year. There has been a decrease in all products because most of the factories have been effected by the COVID-19 situation which has been more severe than last year. Consequently, the production has decreased.



Capacity utilization rate in November 2021 stood at

65.8

percent.

Capacity utilization rate in **November 2020** stood at **64.8** percent.

Capacity utilization rate in **November 2019** stood at **63.1** percent.

For more information contact:

Ornsupha Choawanapreecha

Division of Industrial Economics Research

Tel. 0 2430 6806 Ext. 680684