

Summary of Industrial Production in October 2021

Concerning the industrial production in October 2021, the Manufacturing Production Index (MPI) has expanded by 2.9 percent, compared with the same month of the previous year, which has been caused from the expansion of key industries, such as automobiles, circuit boards and products from petroleum refinery. The Capacity Utilization Rate in October 2021 is 64.1 percent.

Manufacturing Production Indexes of Key Industries

The MPI in October 2021 has expanded by 2.9 percent, compared with the same month of the previous year. The key industries with expanded production include automobiles, computers and accessories, and products from petroleum refineries are as follows;



The MPI of the automobiles industry has expanded by 6.0 percent, compared with the same month of the previous year, due to the shortage of semiconductor (chips) and parts began to be more relaxed. Part factories inside and outside the country have begun to supply more products to Thai producers, enabling automotive producers to produce automobiles in the normal level, including the launching of new models of automobiles to urge the market in the country after the government has implemented more relaxed measures.

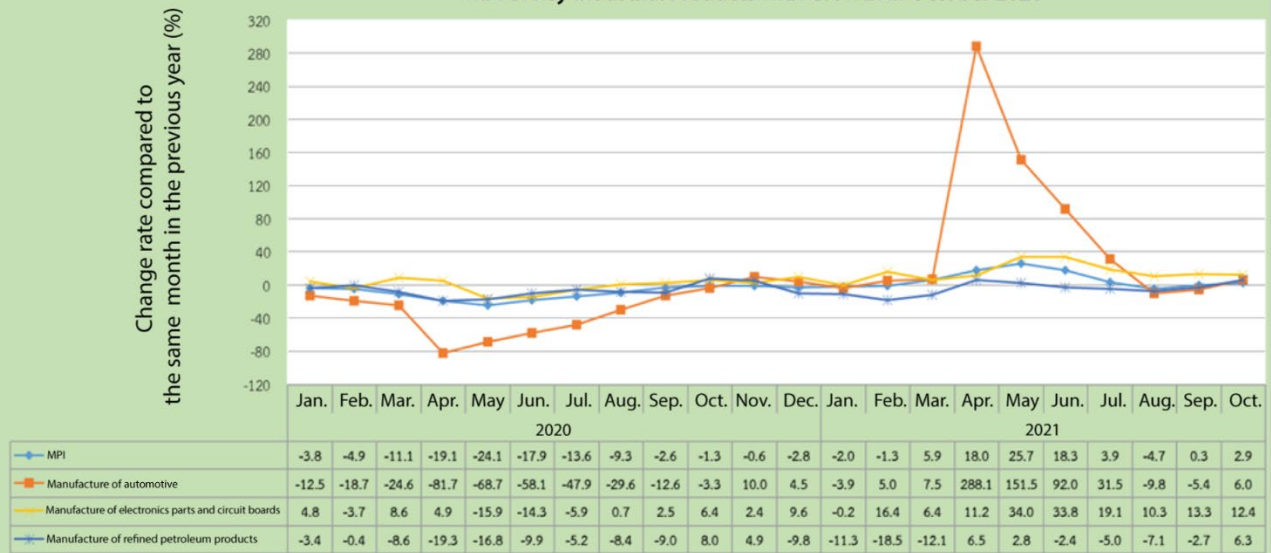


The MPI of the electronic parts and circuit boards has expanded by 12.4 percent, compared with the same month of the previous year, due to the demand for electronic parts in a global market that is consistently growing, causing the demand for modern electronic devices in the world market to increase, these included cellphones, notebooks, automobile servers and smart home devices.



The MPI of product from petroleum refinery industry has expanded by 6.3 percent, compared with the same month of the previous year, because the situation of the spreading of the COVID-19 virus inside and outside the country and in ASEAN countries which is a key export market has been improving. Consequently, economy activities have gone back to the normal situation. Thus, more fueled is used for transport, travel and industrial production.

MPI of Key Industrial Products with Growth in October 2021



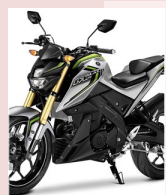
Meanwhile, industries with reducing production are computers and accessories, houseware and motorcycles.



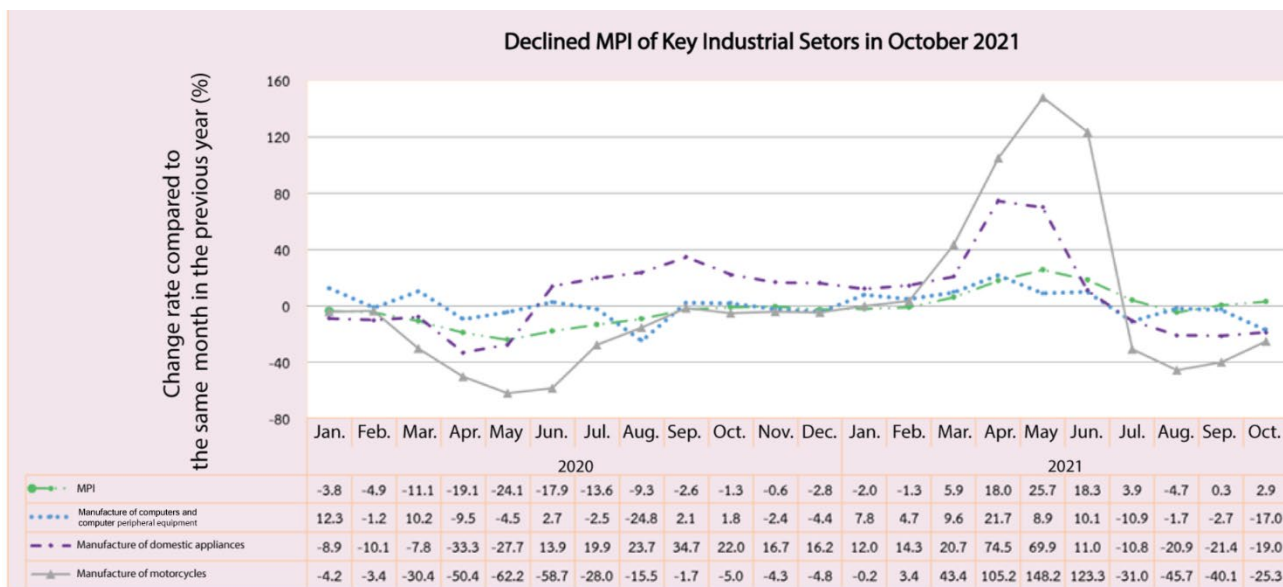
The production of computer and accessories has reduced by 17.0 percent, compared with the same month in the previous year, because of the effects from the spreading of the COVID-19, disabling the production facility to produce to the fullest capacity. In addition, there have been problem of part shortage and problem of high costs of certain transport flights. Consequently, products cannot be supplied within the deadlines. As for printers, some old models are cancelled and orders for some models increase.



The production of household appliances has reduced by 19.0 compared with the same month in the previous year, because of the effects from the spreading of the COVID-19 in factories, causing the production in the same supply chain management to get effected. In addition, transporting the products is also not facilitating because there is a shortage of containers and the ship freight is high.



The production of motorcycles has reduced by 25.3 percent compared with the same month in the previous year, because the purchase power in the country is still slow and the problems of floods in many agricultural areas, causing farmers, which are the main customer group, to have less income. The consumers in the labor sectors are still dealing with the effects of the COVID-19.



Capacity utilization rate in October 2021 stood at

64.1

percent.

For more information contact: Naret Kitchaphathanaphan Division of Industrial Economics Research Tel. 0 2430 6806